

Kaymar

Fitting Instructions



Vehicle	Holden Colorado7
Year	2015
Type	Wagon
Part	Rear Bar

Applicable to Part Numbers

K3945 Rear Bar

Kits: KITMUX, KITMUX-L-JCS, KITMUX-R-JCS

See also related fitting instructions for reversing sensors, carriers and jerry can holders

Date published November 17, 2016

IMPORTANT - BEFORE COMMENCING INSTALLATION

Please verify the part number corresponds with the list above.

Read through these instructions and check items in the supplied fitting kit matches the attached list.

Every effort is made to ensure instructions are as accurate as possible at the time of publishing however work should not be commenced until the document has been thoroughly read, measurements checked and all components in the package verified as complete.

Kaymar has used reasonable care in preparing the information included in these documents, but makes no representations or warranties as to the completeness or accuracy of the information. Information is supplied upon the condition that the persons receiving the information will make their own determination as to its suitability for their purposes prior to use. Kaymar assumes no liability whatsoever for any damages incurred by you resulting from errors in or omissions from the information included herein. Kaymar reserves the right to make changes without further notice to any products to improve reliability, function or design.

Holden Colorado 7

Kaymar

Fitting Instructions



1. Remove the spare tyre from under the vehicle then remove bumper and tow bar if fitted
2. To remove the bumper, undo all screws holding the mud flaps in position. Retain the mud flaps for refitment later.
3. Open the tailgate and remove two screws, one either side below the tail light assembly. (Fig. 1)



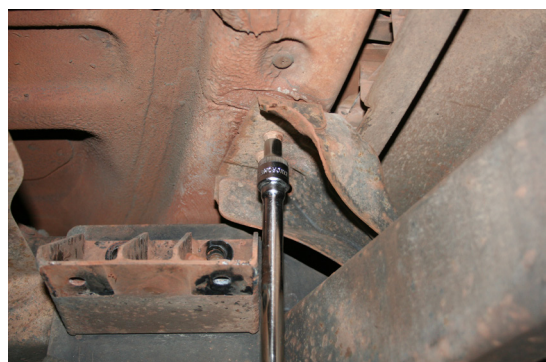
(Fig. 1)

4. Flip up the plastic covers concealing the screws in the tail light assembly. Undo the screws and remove the tail light by gently pulling towards the rear of the vehicle. (Fig. 2)



(Fig. 2)

5. Under the bumper there are three metal support brackets. Remove these and discard as they will not be reused. (Fig. 3 & 4)



(Fig. 3 & 4)

Kaymar

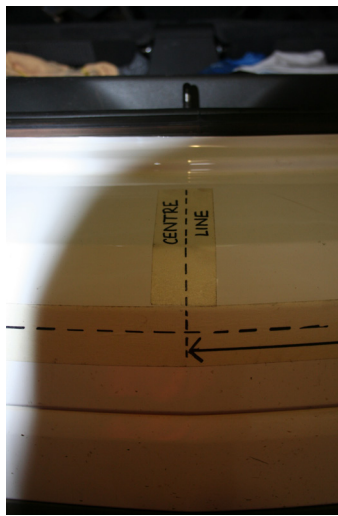
Fitting Instructions



6. Unplug the sensor harness from under the left side of the bumper. Unplug the reversing lights - one either side.

Marking and cutting the bumper

7. In the top centre of the bumper is a defined line. Apply masking tape and with a felt tip pen mark the centre line. (Fig. 5)



(Fig. 5)

8. The bumper has two defined horizontal lines running across the back of the bumper. Using the centre line and bottom line as a reference make a mark 300mm either side of the centre line. At the mark measure down 15mm from the lower horizontal line. (Fig. 6)



(Fig. 6)

9. From the centre line make another mark 650mm across the same line. This is the reference point for the cardboard template. (Fig. 7)

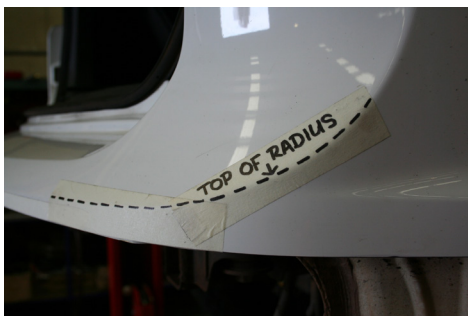
Kaymar

Fitting Instructions



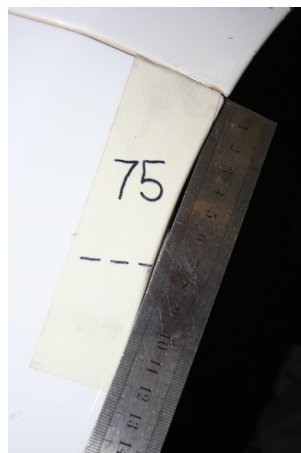
(Fig. 7)

- Place the template against this mark and wrap the template around the corner of the bumper using the natural lines on the bumper as a guide. Place the template along the top edge of radius. (mark a line along the bottom edge of the template. (Fig. 8, 9, 10)



(Fig. 8, 9, 10)

- At the wheel arch mark down 75mm from the top of the bumper. (Fig. 11)



(Fig. 11)

- With a ruler join all marks using a felt tip pen. (Fig. 12 & 13 following page)

Kaymar

Fitting Instructions



(Fig. 12 & 13)

13. Starting at the wheel arch gently unclip and remove.
14. Sit the bumper on a soft non-abrasive surface and remove the four sensors from the sensor housings. Remove the sensor harness and retain.
15. **NOTE: The vehicles factory sensors will no longer be usable - a Kaymar sensor kit is required.**

Once the sensors are disconnected the vehicle picks up a fault. To overcome this fault wrap the sensors individually with white packaging foam and tape up using masking tape. The sensors then need to be positioned in a dry secure area in or under the vehicle. (Fig. 14 & 15)



(Fig. 14 & 15)

Plug the sensor harness back in and check the fault has gone.

(By covering the sensors with foam the vehicle believes the sensors are still active and will give off a beep when reverse is selected. A Kaymar reversing sensor kit will need to be fitted. See the separate sensor fitting instructions.

16. Using a grinder with a thin cutting wheel cut the lower section of bumper off. Clean up the cut edge using a Stanley knife to remove any burrs. Re-fit the bumper to the vehicle. (Fig. 16 & 17 following page)

Kaymar

Fitting Instructions



(Fig. 16 & 17)

17. Run a length of pinch weld (supplied) along the entire length of the cut edge.
Fit M6 cage nuts to the inside of the mud flap plate at the end of the wing to the bottom and centre holes only. (Fig. 18)



(Fig. 18)

18. With another person lift the Kaymar bar on to the vehicle - being careful not to touch the body.
19. Loosely fit 4 either side M12 x 35 x 1.25 bolts, spring and flat washers through the bar into the captive nuts in the chassis.
20. **NOTE:** Packers may be required to evenly centre the bar on the vehicle. If required slide a packer to one or both sides using the supplied packers.
21. Slide a supplied 3mm packer between the bottom of the chassis and the bar. Fit M10 x 50 x 1.25 bolts, spring and flat washers to the bottom of the bar. (Fig. 19 & 20 following page)

Kaymar

Fitting Instructions



(Fig. 19 & 20)

22. Check bar is evenly spaced and tighten all bolts starting with the bottom four.
23. Fit the bumper support plate supplied in the fitting kit to the two bolts in the centre of the body where the original bumper support plate was removed earlier. (Fig. 20)



(Fig. 20)

24. Refit mud flaps using original screw in the top of the mud flap and the M6 pan head screws in the bottom two holes.
25. Refit the tail light assembly using the original hardware.

Kaymar

Fitting Instructions



26. Splice the wiring for the LED lights into the trailer harness using the table below.

Function	Trailer Harness	LED
Left signal	Yellow	Yellow
Right signal	Green	Green
Stop	Red	Red
Tail	Brown	Brown
Reverse	Black	Black
Earth	White	White

If carriers or jerry can holder is to be fitted see separate fitting instructions.

Kaymar

Fitting Instructions



Colorado 7 Bar Fitting Bolt Kit

- 8 x M12 x 1.25 x 35
- 8 x M12 flat H/D washers
- 8 x M12 spring washers
- 4 x M10 x 1.25 50
- 4 x M10 flat washers
- 4 x M10 spring washers
- 2700mm x 14mm pinchweld
- 4 x M6 cage nuts
- 4 x M6 pan head screws
- 2 x 5mm spacers
- 2 x 3mm spacers
- 1200mm x 7-core wire
- 10 x male terminals
- 1 x Colorado 7 cardboard template
- 1 x bumper support bracket for Colorado 7