

Kaymar

Fitting Instructions



Vehicle **Several**
Year
Type **K6196 Gas Strut Fitting**
Part

Applicable to Part Numbers

K6196

Date published March 28, 2018

K6196 Gas Strut Fitting Instructions

- GU 4** From out side edge of shaft, measure 45mm towards centre of vehicle and 45mm from face of bar.

GU 1 From out side edge of shaft, measure 25mm towards centre of vehicle and 40mm from face of bar.

80 series - If vehicle is fitted with Hella lights. Remove lens from light. From out side edge of shaft, measure 35mm towards centre of vehicle and 40mm from face of bar.

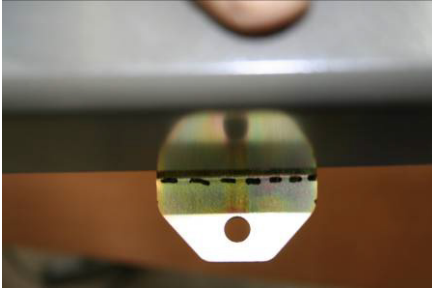
75/78 series (Old style bar) From out side edge of shaft, measure 30mm towards centre of vehicle and 60mm from face of bar.



- Centre punch mark, and drill out to 1/4", tap using M8 x 1.25.
- Open carrier to full extension (against bar stop) and clamp carrier strut bracket, with bracket stepping down and lower fold line flush with carrier arm. So that the strut bracket is one hole diameter forward of the full extension of the gas strut. This is required so that when the carrier is fully open, the gas strut is NOT at full extension.

Kaymar

Fitting Instructions



Note: With this bracket clamped into position, a measurement of 270mm should be achieved between the two hole centres.

Mark, Drill and rivet bracket to carrier arm.

4. Mount cylinder end of gas strut to the rear bar until the thread just starts. Mount the other end of strut to carrier bracket. (A part compression of gas strut may be required.).
5. Tighten both flange nuts to complete installation.

*NOTE: New lock open bracket not compatible with some conversions, some still requiring original lock open pin

REPEAT STEPS 1- 4 if other carrier required.