



JEEP JT GLADIATOR

PRODUCTION DATE: 2019 ONWARDS

FITTING INSTRUCTIONS FOR:

ACCESSORY PART NUMBER: K703037

REAR BAR



⚠ CAUTION

This kit weighs in excess of 15kg.
Seek help to lift if required.

CARE INSTRUCTIONS

Wash with regular car wash products.
Regularly check bolt torque settings.

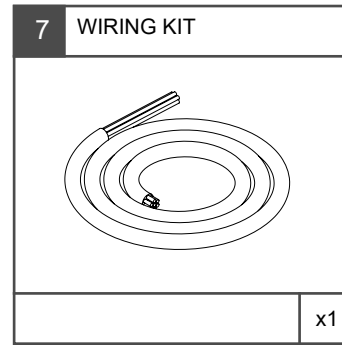
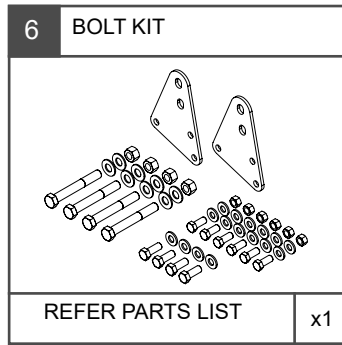
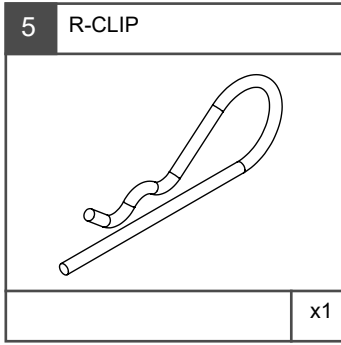
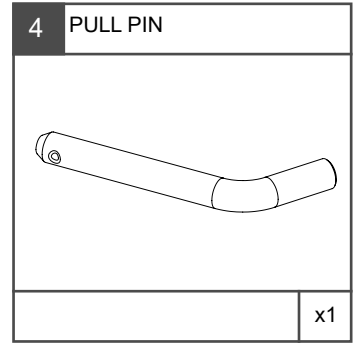
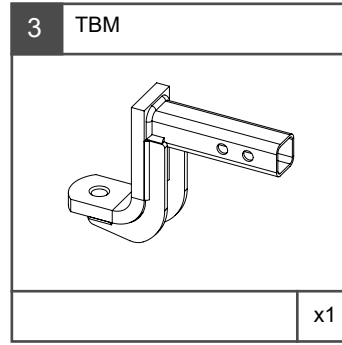
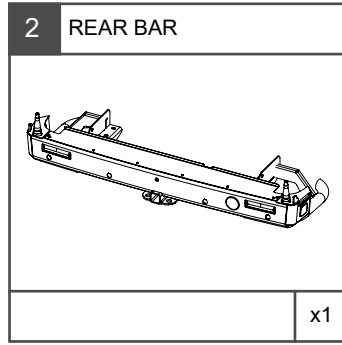
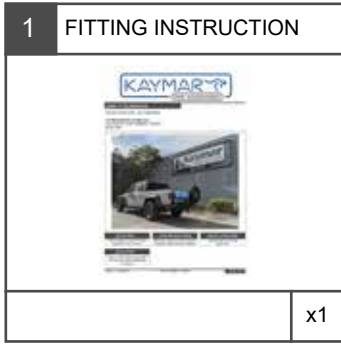
INSTALLATION TIME

Approximately 60 minutes
(guide only).

⚠ CAUTION

Ensure correct tools & appropriate
PPE are used whilst installing this
accessory

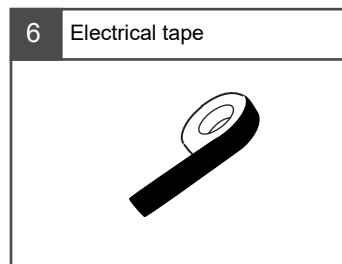
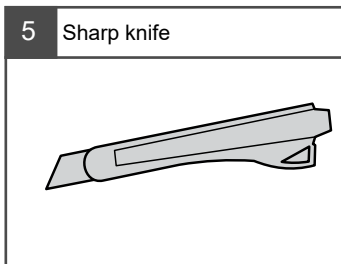
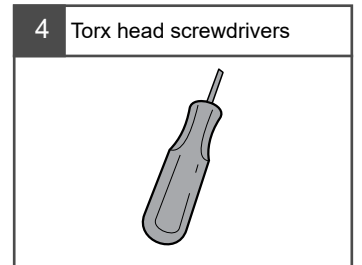
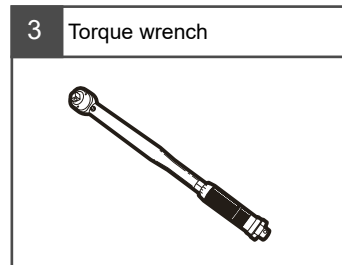
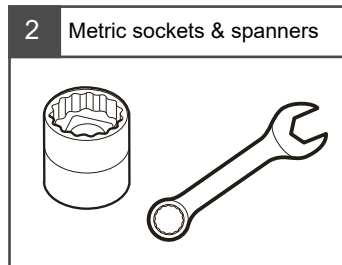
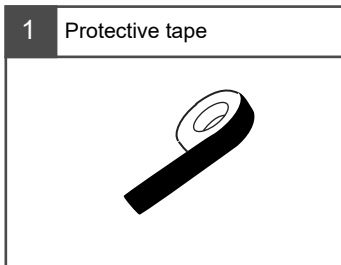
KIT CONTENTS



 CHECK THAT THE CONTENTS OF THE REAR BAR KIT ARE COMPLETE & UNDAMAGED PRIOR TO FITMENT.

 IF ANY CONTENTS OF THE REAR BAR KIT ARE INCOMPLETE OR DAMAGED THEY MUST BE REPLACED USING SPECIFIED ACCESSORY COMPONENTS.

TOOLS REQUIRED



REAR BAR ASSEMBLY

⚠ CAUTION

This tow bar is to be used for trailer towing only.

TOWING CAPACITY - AUSTRALIA

Maximum Braked Capacity: 2721 kg
 Maximum Unbraked Capacity: 750 kg
 Maximum Static Ball Load: 272 kg

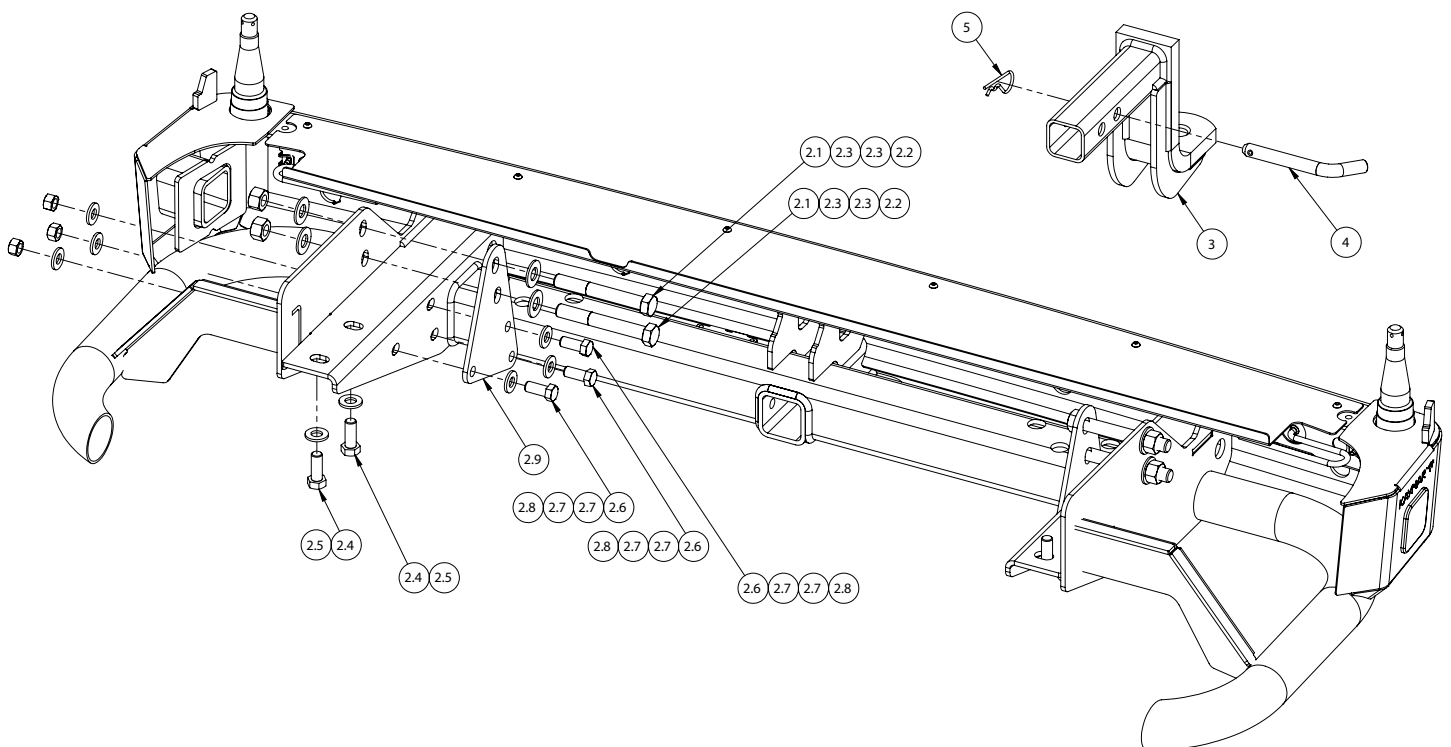
TOWING CAPACITY - NORTH AMERICA

Maximum Braked Capacity: 7650 lbs
 Maximum Unbraked Capacity: 1650 lbs
 Maximum Static Ball Load: 765 lbs

PARTS LIST

Check contents of kit before commencing & report any discrepancies.

ITEM NO.	DESCRIPTION	QTY.
1	JEEP JT GLADIATOR REAR BAR	1
2	BOLT KIT - JT GLADIATOR	1
2.1	M16 x 120 2.0P BOLT	4
2.2	NUT M16 x 2.0P PC8	4
2.3	FLAT WASHER M16 x 33.5 x 2.5 Z/P	8
2.4	Bolt M14 x35x 2P GR 8.8 z/p	4
2.5	WASHER PLAIN M14 X 28 X 3	4
2.6	M12 x 30 BOLT 1.75P	6
2.7	WASHER PLAIN 1/2"	12
2.8	NUT HEX HD M12 X 1.75P G8	6
2.9	CHASSIS SUPPORT PLATE - JT GLADIATOR	2
3	TBM	1
4	PULL PIN	1
5	R CLIP	1



Note:

If you are installing any other accessories or optional kits with the Rear Bar please ensure you have read the relevant fitting instructions prior to installing the rear bar.

1.

Remove the factory rear step bumper and any additional side protection pieces depending on vehicle spec level.

Note:

Make sure to disconnect the lamp & parking sensor wiring harness connectors on both sides of the chassis before removing



2.

Place the factory rear step onto a bench or stand, disconnect all 4 parking sensors and lamp connectors then remove the wiring harness by releasing all the push in connectors.

Note:

Discard the factory rear step and place the wiring harness in a safe place to be used later.



3.

Place the new Kaymar replacement rear bar onto a bench or stand and attach the new supplied sensor bezels into the barface using the supplied locking rings, make sure the 3 spacer tabs on each locking ring are bent outwards prior to fitment to allow them to compress properly and lock into the bezel.

Note:

L/H & R/H Bezels are different please check cut-outs in bar face



4.

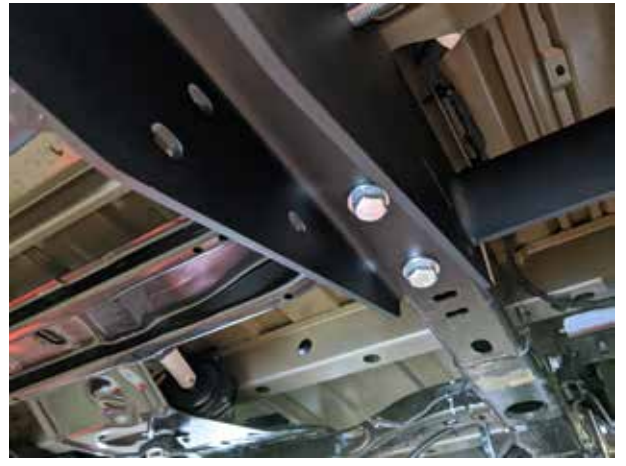
Place the sensor harness onto the rear of the new bar and click the 4 parking sensors into the bezels, make sure the harness is placed correctly by checking the plug placement in relation to the plugs on the vehicle chassis.

Attach the loom neatly to the bar passing it through the cut-outs in the centre gussets using cable ties as necessary.



5.

Offer the new Kaymar Bar up to the chassis and attach loosely using 2x M14 x 35 Bolts (Item 2.4) and M14 Washers (Item 2.5) per side as shown.



6.

With the bar correctly positioned, place the chassis support plates onto the inside of the chassis rail.

Insert 2x M16 x 120 Bolts (Item 2.1) and M16 Washers (Item 2.3) through the chassis rail, attach using 2x M16 Nuts (Item 2.2) & M16 Washers (Item 2.3) on the outside of the rail.

Insert 3x M12 x 30 Bolts (Item 2.6) and M12 Washers (Item 2.7) through the lower section of the support plate into the side arm of the bar and attach using 3x M12 Nut (Item 2.8) and M12 Washers (Item 2.7)

Repeat process for opposite side.



Once all fasteners are installed and the bar is positioned in the desired location torque all fasteners to the specifications below:

M16 - 180Nm (132 ft-lb)

M14 - 125Nm (92 ft-lb)

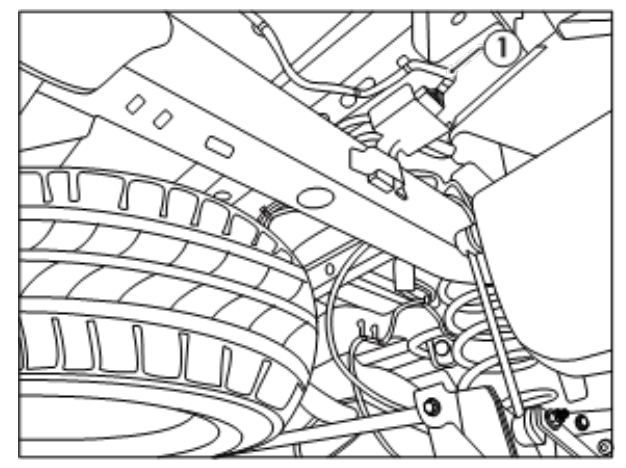
M12 - 80Nm (60 ft-lb)



8.

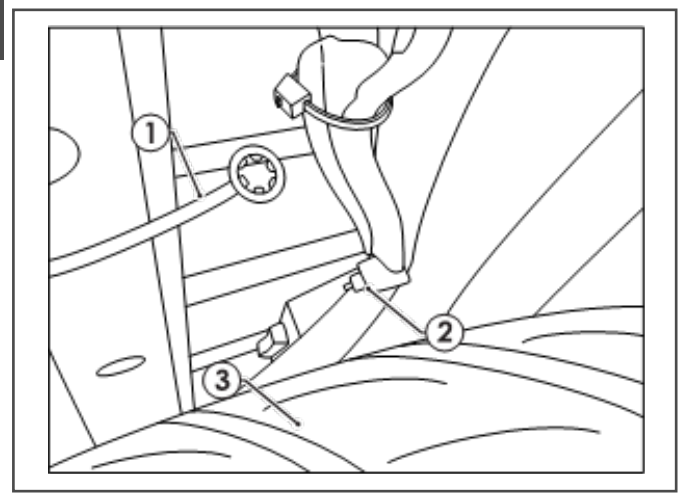
For the Australian market, install the trailer wiring as as per instructions.

Under the vehicle RHS, locate the connectors (1) behind the wheel arch. Patch in the Trailer Patch Harness (102526-WL) RHS branch between the vehicle connectors (1).



9.

Route the trailer patch above the spare wheel towards the LHS
Connect the star ring terminal (1) to the vehicle earth point (2) above the rear of the spare tyre (3).



10.

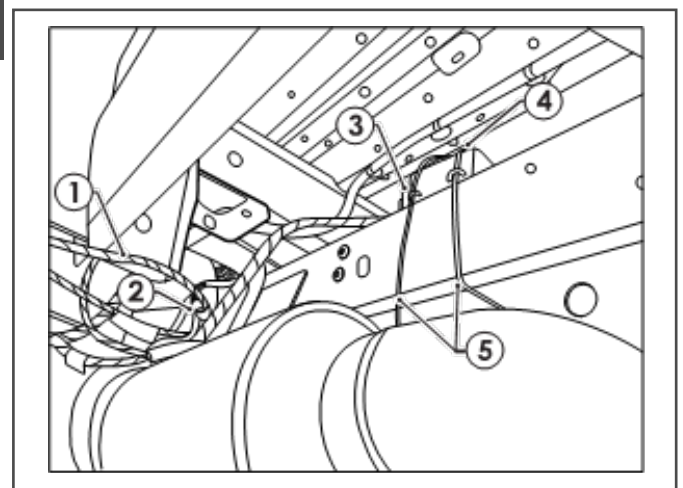
Under the vehicle LHS, locate the connectors behind the wheel arch.

Patch in the trailer patch harness LHS branch (1) between the vehicle connectors (2).

Connect the trailer patch ECU 24 way connector (3) to the ECU (04835) (4).

Using Cable Ties (5) secure the ECU to a suitable location above the chassis rail.

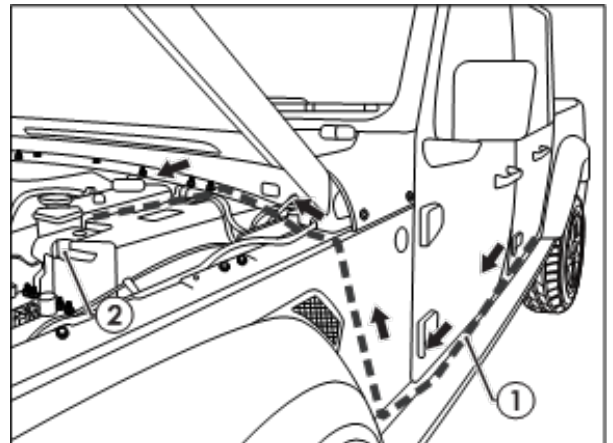
Note: Keep harness routing clear of all sharp edges, moving parts and places of extreme heat.



Connect the power harness (04835) (1) to the battery positive terminal (2) and route it down the firewall to the vehicle underbody.

Continue routing the power wire down the LHS towards the rear of the vehicle.

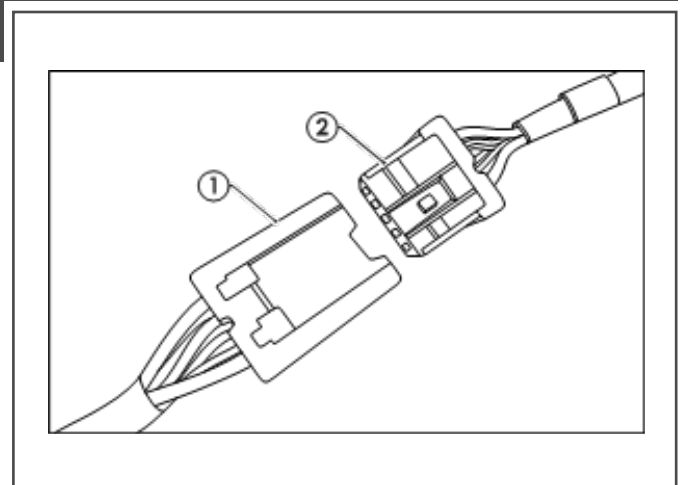
Connect the power harness 1 way connector to the mating connector on the trailer patch.



12.

Connect the tail harness (tail length 1200mm) 8-way connector (1) to the trailer patch mating 8-way connector (2).

Secure all harness using supplied Cable Ties.



13.

Splice the rear bar lights into the trailer harness as shown.

Yellow	<i>L/H Turn</i>	Green	<i>R/H Turn</i>
Black	<i>Reverse</i>	Red	<i>Stop Lamp</i>
White	<i>Earth</i>	Brown	<i>Tail Lamp</i>

Note:

Check that all lights are functioning correctly.



14.

For the North American version the factory trailer wiring harness can be re-installed into the new bar using the kit supplied.

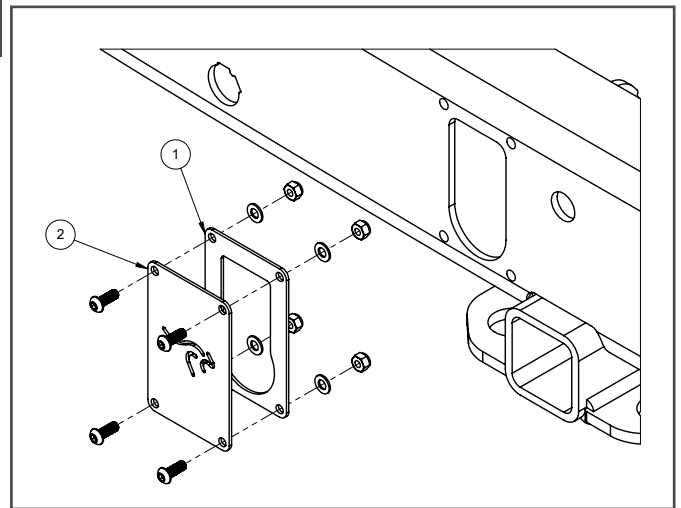
Attach plate #1 shown in the image to the bar face using the fasteners supplied in the kit and clip the trailer plug into this plate from the front, re-connect the factory trailer harness from the rear.

If a trailer harness is not being used, attach the Blanking plate #2

Using the 7-core wire provided in the kit, splice the rear bar lights into the vehicle tail lights.

Note:

Check that all lights are functioning correctly.



15.

If you are installing any other accessories with the rear bar please refer to the relevant fitting instructions before installation:

