

Kaymar

Fitting Instructions



Vehicle Toyota LC200 GX, GXL, VX, SAHARA

Year All

Type Wagon

Part Wheel Carriers
Jerry Can Holders

Applicable to Part Numbers

K20010L, K20010R, K20012L, K20012R, K20013L, K20013R, K20015L, K20015R, K20017L, K20017R, K20018L, K20018R, K20020L, K20020R, K20022L, K20022R, K20023L, K20023R, K20025L, K20025R, K20026L, K20026R, KIT200GX, KIT200GXL-JC, KIT200GXR-JC, KIT200-S, KIT200L-S-JC, KIT200R-S-JC, KIT200, KIT200L-JC, KIT200R-JC, KIT200FLVX, KIT200FJVXL-JC, KIT200FLVXR-JC, KIT200FLGXL, KIT200FLGXL-L-JC, KIT200FLGXL-R-JC

Date published December 18, 2018

IMPORTANT - BEFORE COMMENCING INSTALLATION

Please verify the part number corresponds with the list above. Read through these instructions and check items in the supplied fitting kit matches the attached list.

Landcruiser 200 Series Fitting Issue

ISSUE

When fitting the **WHEEL CARRIERS** to the LC200 please be aware of the following issue/s:

Body NOT central on chassis preventing carriers from opening properly

IMPORTANT

Each LC200 vehicle may be different

REMEDY

Once the bumper is removed check to see whether the body is central on the chassis by measuring each side - see two photos below

On this particular vehicle the body has been mounted 8mm off centre to the drivers side.

For the carrier to work correctly and not touch the bumper, cut 4mm (in this example) off the top and bottom stop of the corner bracket - see photo below



Passenger side measurement 72mm



Driver side measurement 64mm



Kaymar

Fitting Instructions



LandCruiser 200

IF WHEEL CARRIER OR JERRY CAN HOLDER IS TO BE FITTED PERFORM THE FOLLOWING STEPS

1. Remove the red reflectors from the plastic bumper, on the side where the carrier/s are to be fitted.
2. Remove the black plastic tread top of the bumper. Mark the cut lines as per the following photos. (Figs 1-3) Photos are of the left side of the bumper. Repeat for opposite side if a carrier is to be fitted there. The cut lines are only approximate as the cut outs are just for clearance of the wheel carrier pivot. Cut the plastic following the lines.



LC200 GLX

Cut along the dotted lines only (see Figs 1-3)

PRE AUGUST 2015



Fig 1



Fig 2



Fig 3

POST AUGUST 2015

NOTE: Template may overhang bumper



Fig 4

Note: Template overhangs bumper

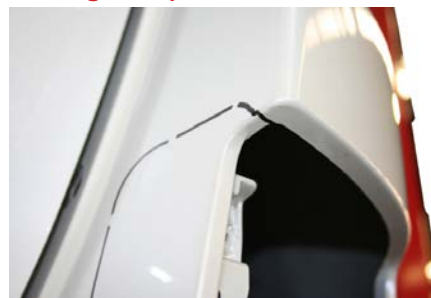


Fig 5



Fig 6

Kaymar

Fitting Instructions



GX BARN DOOR MODELS

NOTE: CUT THIS SECTION WHILE BUMPER IS OFF THE VEHICLE

Remove the bumper from the vehicle before making cut.

The template should be aligned on the bumper so the top of the cut is 2mm below where the hinge recess cover curves inward.



Kaymar

Fitting Instructions



Fig 7



Fig 8



Fig 9



Fig 10



Fig 11

IF FITTING A BAR SKIP TO STEP 6A

3. Tape the drill hole template to the bumper flush at the top edge as shown in photo above (left hand side).
Mark the holes with a felt tip pen. Flip template end for end to mark the opposite side for the right hand light.
4. Remove the plastic bumper from the vehicle and drill two outer holes to 6mm and centre hole to 10mm.
5. Turn bumper over and unclip the plastic spacer in-fill support piece from underneath the tread section.
6. Cut out the underneath section of plastic at least 10mm deep. This is to clear the catch support base when it fits back onto the top of the chassis. (Catch supports are shown in item 12).

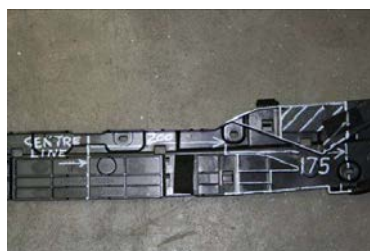


Fig 12



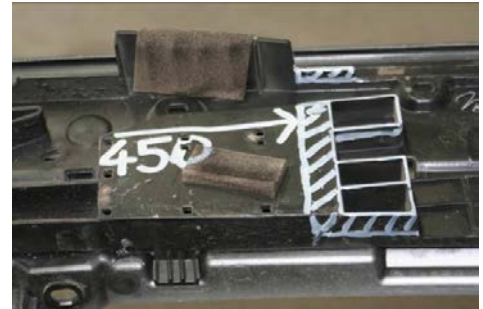
Fig 13

Kaymar

Fitting Instructions



6A. Turn it upside down and mark the sections to be cut down as per photos below.



Measure from the centre across. Pictures show the right hand side, if the spacer were in position on the vehicle. Grind these sections down 10mm, so as they clear the Kaymar bar mounts when the bar is fitted. Do the same to both sides. **FOR VEHICLES WITH SENSORS - ONCE THIS IS DONE REFIT THE SENSOR HARNESS**

7. Re-fit spacer infill to the bumper.

8. Fit the LED lights onto the bumper. Use 5mm screws and nuts supplied. They fit to holes drilled earlier. **NOTE: If fitting a bar refer to bar instructions**

Splice into original wiring for lights. Short length to right hand side. Long length to go across to left hand side.

DO NOT SPLICE INTO WIRING BEHIND THE LIGHTS IN THE BODY. VEHICLE MUST HAVE A TRAILER PLUG WIRING HARNESS FITTED, IF IT DOES NOT HAVE ONE ALREADY FITTED.

WIRING CODE:

LED LIGHTS	VEHICLE
Yellow – Indicator	Yellow – LHS Indicator
White – Earth	Green – RHS Indicator
Brown – Stop	White – Earth
Red – Brake	Red – Stop
Black - Reverse	Brown – Tail
	Black - Reverse

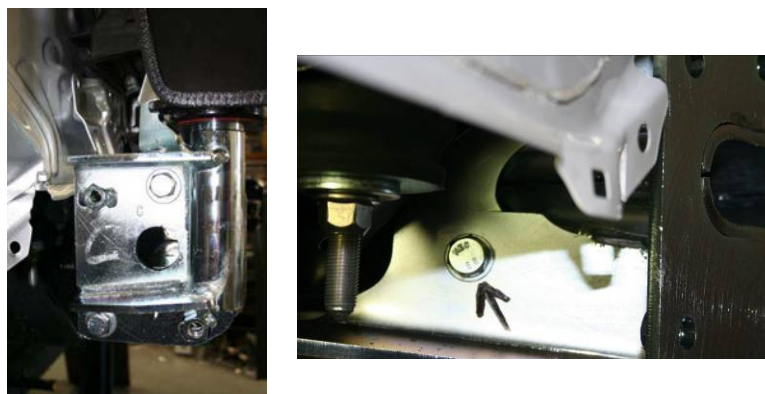
NOTE: For facelift models after Aug 2015 - If fitting a camera to a carrier or jerry can holder (K6314JC-KIT, K6314-KIT) refer to separate installation instructions.

Kaymar

Fitting Instructions



9. Remove tie down lug from chassis. Fit the main silver bracket into the oval shaped hole in the chassis. Push it all the way into the chassis. Loosely fit 2 M12 x 50 fine thread bolts, spring and flat washer, through the bottom brace and tie down lug into the captive nuts inside the chassis. FIT THE TWO SLOT SPACER PLATES IN BETWEEN THE BOTTOM OF THE CHASSIS AND THE BRACE.



10. Using a 22mm socket and long extension, tighten the bolt inside the oval brace, make sure it is tight, so as the wedge nut has pulled firmly into the oval tube. Tighten the two M12 bolts in the bottom of the chassis.
11. Using two M12 x 30 fine thread bolts, fit the pivot plate and carrier to the main silver bracket. Make sure the wheel carrier frame is vertical from the side, and the main bottom arm is parallel with the bottom edge of the vehicle tailgate. If it is not parallel, the main silver bracket must be loosened and repositioned until the carrier frame is parallel when all bolts are tightened. Fit and tighten M10 x 30 bolt.
NOTE: If fitting a bar skip to step 15
12. Fit the catch support brace over the chassis cross member. It is the same measurement for both sides. Photo show right hand fit.



Kaymar

Fitting Instructions



Fit the spacer tubes and bolts, Push the support brace firmly forward against the chassis, then tighten the bolts and nuts.



13. Remove the carrier frame and pivot plate.
14. Fit the nut plate behind the front face of the catch support brace, on top of the ribbing section of the chassis. Leave the nut plate loose. Right Hand side shown.



15. Fit the plastic spacer back onto the under side of the bumper and re-assemble the bumper onto the vehicle, using original hardware.
16. Fit pinch weld edging around pivot cut out in bar
17. Fit carrier hub and pivot shaft assembled together into the cut out hole in the bumper corner. Cover the painted areas of the bumper around the hole with tape first, to prevent scratching.
18. Fit the four M12 fine thread bolts under the bumper and into the mounting plate.
19. Tighten the four bolts firmly. Make sure the carrier is vertical or leaning slightly in towards the tailgate (when viewed from the side) and parallel with the bottom of the tailgate when viewed from the back.

Kaymar

Fitting Instructions



NOTE: If fitting a bar

Sit catch behind the carrier and against the Kaymar bar. Locate the catch 35mm from the handle and mark the two hole centres. Drill out to 11mm.

20. Sit catch behind carrier and against bumper and locate catch 35mm from handle, with a felt tip pen mark the two hole centres of catch. Drill a pilot hole to find the centre of the holes in the catch bracket, if body is off centre to chassis loosen catch bracket and move across to pilot holes.



21. Position the carrier into the catch and move the catch up or down so that the carrier does not rub against the top or bottom of the catch. Tighten the two bolts.



Kaymar

Fitting Instructions



22. Fit gas strut between carrier and corner bracket using M8 flange nuts.
23. Fit the top slide wheel mount into the carrier. DO NOT TIGHTEN.
24. Fit the wheels onto the carrier top slide section. Fit the lock plate into the centre of the wheel and then the three wheel nuts. Make sure the nuts screw easily into the recess in the wheel without binding.

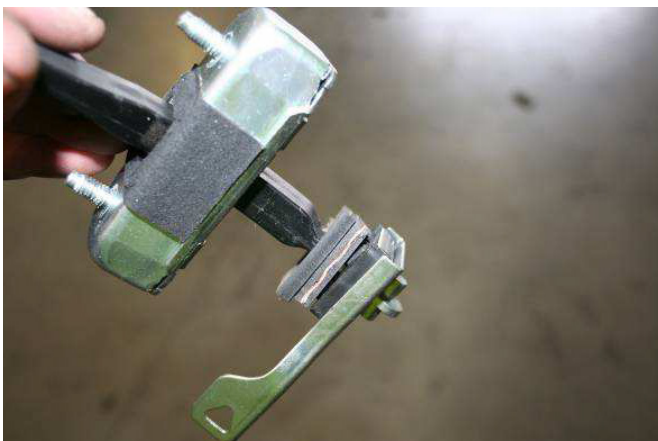
NOTE: ON GX MODELS – THE BARN DOOR MAY NEED TO BE ADJUSTED, SO THE DOORS DO NOT TOUCH THE CARRIER ARMS.

24.1. If carrier/carriers touch door. Remove panel from inside rear door.

24.2. Undo 3 x bolts that hold in check strap and remove.



24.3. Using one or both rubber packers supplied, fit to check strap as shown in photos below. Tap rubber packers in with electrical tape.



24.4. Re-fit check strap and panels using original hardware

Kaymar

Fitting Instructions



25. Stand behind the open carrier and pull the tyre back until it fits firmly against the carrier frame. It is best to have the top of the tyre further into the vehicle than the bottom. Lightly tension the two bolts in the side of the top slide section. Make sure the lug washers fit into the wheel carrier slots.

Stand to the side of the vehicle and make sure the tyre is angled in at the top to suit the angle of the rear of the vehicle. The tyre must be sitting firmly against the bottom rail of the carrier. Firmly tension the two bolts in the top slide and hammer the flats of the tab washers down onto the flat of the bolt head.



26. If required, cut black plastic fill in panel as per item 9 and re-fit to the underside body panel behind mudflap. Re-fit to body using original square plastic pull through plugs only.



27. Fit red reflector to pivot cover plate below Kaymar name and across rectangular hole
28. Add pivot plate cover to the 2 x cage nuts on carrier using the screws provided See photo
29. Adjust the pivot plate so as it covers the majority of hole and allowing carrier to open properly.
30. Once in position remove 1 screw and apply Locktight 243. Refit screw then remove the other and apply Locktight 243.

Vehicle must have a trailer wiring loom for Kaymar lights to be wired into.

If not already fitted, a loom must be installed.

DO NOT SPLICE WIRING INTO BACK OF ORIGINAL LIGHTS IN BODY!!!

Kaymar

Fitting Instructions



Above: Showing reflector panel for pre August 2015 models

Right: Showing difference in post August 2015 facelift models



31. Please stick on 3M plastic film (provided) to the bar where the latch is situated to protect the bar finish.

Kaymar

Fitting Instructions



IMPORTANT FOR SAHARA

1. Wheel stud bolts on the wheel carrier - replace to suit SAHARA alloy rims:
Remove 3 x M14 x 50 x 1.5 bolts from the top slide and refit with M14 x 80 x 1.5 bolts.
2. Slide top slide into carrier frame, fitting wheel, lockplate and wheel nuts.
3. Tighten wheel nuts and adjust top slide as per carrier instructions.

This process fits an emergency rubber bump-stop to prevent accidental damage if the tailgate release is activated before the carrier is opened.

1. Knock out the plastic blanking cap from the top slide and replace with steel backing washer.
2. Fit M10 bolt with washer through rubber stopper and 6mm spacer washer.



3. Fit into captive nut in the backing washer and tighten.
4. Drill through the top slide/backing washer and rivet in place.



5. This is only a buffer for rear power door if accidentally operated while carriers are closed

Kaymar is in no way responsible for any damage caused by operating power door while carriers are closed or not fully open.

Kaymar

Fitting Instructions



Bolt Kits for 200 Series Carriers

BK6121 LIGHT (NOT INCLUDED IF KAYMAR BAR ALREADY FITTED TO THE VEHICLE)

200 SERIES LIGHT KIT

- 1 LIGHT LED STOP-TAIL-IND-REVERSE LHS
- 1 LIGHT LED STOP-TAIL-IND-REVERSE RHS
- 10 WIRE CONNECTOR FEMALE
- 10 WIRE CONNECTOR MALE
- 4 SCREW COUNTER SINK M5 X 15
- 4 NUT FLANGE M5
- 1 WIRE TRAILER 7 CORE 1600 MM LENGTH

BK6146 200 SERIES CARRIER ONLY CATCH KIT

200 SERIES CATCH KIT

- 1 PACKER CATCH BACKING 8MM
- 2 BAR
- 2 BOLT M10 X 130 X 1.5
- 4 WASHER FLAT M10 X 30 HD
- 2 NUT NYLOC M10 X 1.5
- 2 10MM TUBE SPACER 102MM LONG



packer_catch_backing_8mm_LK269



10mm_tube_spacer_55mm_long

BK6147 200 SERIES CARRIER ONLY

200 SERIES CARRIER ONLY KIT

- 1 CATCH SLIM LINE
- 1 BACKING PLATE 2MM NUTS WELDED ON - 10MM X 2
- 2 BOLT M10 X 50 X 1.5
- 1 BOLT M10 X 30 X 1.5
- 4 BOLT M12 X 30 X 1.25 FINE THREAD
- 2 BOLT M12 X 50 X 1.25 FINE THREAD
- 3 WASHER FLAT M10 X 20
- 3 WASHER SPRING M10
- 6 WASHER FLAT M12 X 30 HD
- 6 WASHER SPRING M12
- 1 PACKER DOUBLE SLOT 8MM 75 X 48
- 1 PINCH WELD 14MM STRIP LENGTH 240MM
- 1 REFLECTOR



backing_plate_2mm_nuts_welded_on_10mm_x2_LK269A



packer_double_slot_8mm_75x48_MK366_8M

Kaymar

Fitting Instructions



Bolt Kits for 200 Series Carriers

BK6146 200 SERIES CARRIER ONLY CATCH KIT



packer_catch_backing_8mm_LK269



10mm_tube_spacer_55mm_long

BK6147 200 SERIES CARRIER ONLY



*backing_plate_2mm_nuts_welded_
on_10mm_x2_LK269A*



packer_double_slot_8mm_75x48_MK366_8M